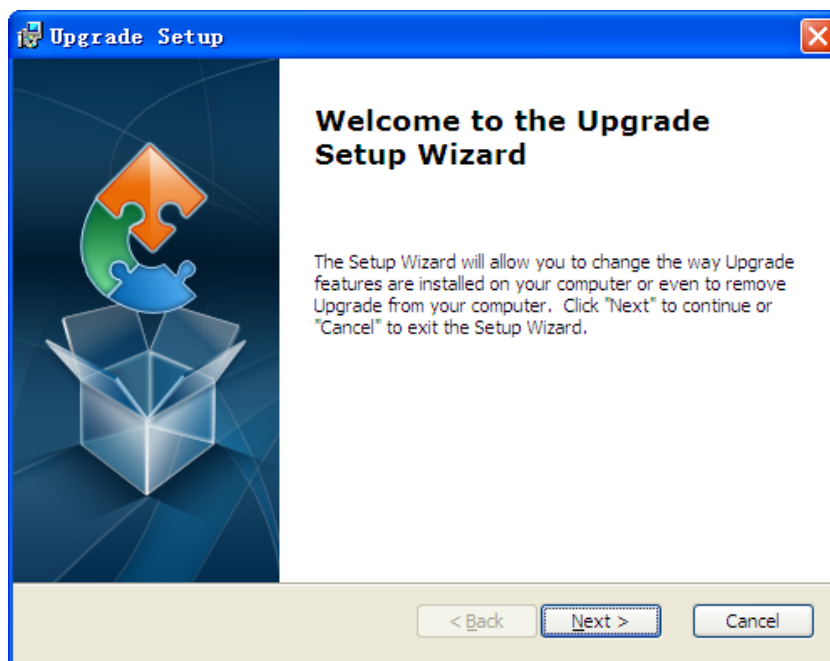


## Upgrade Tool user manual

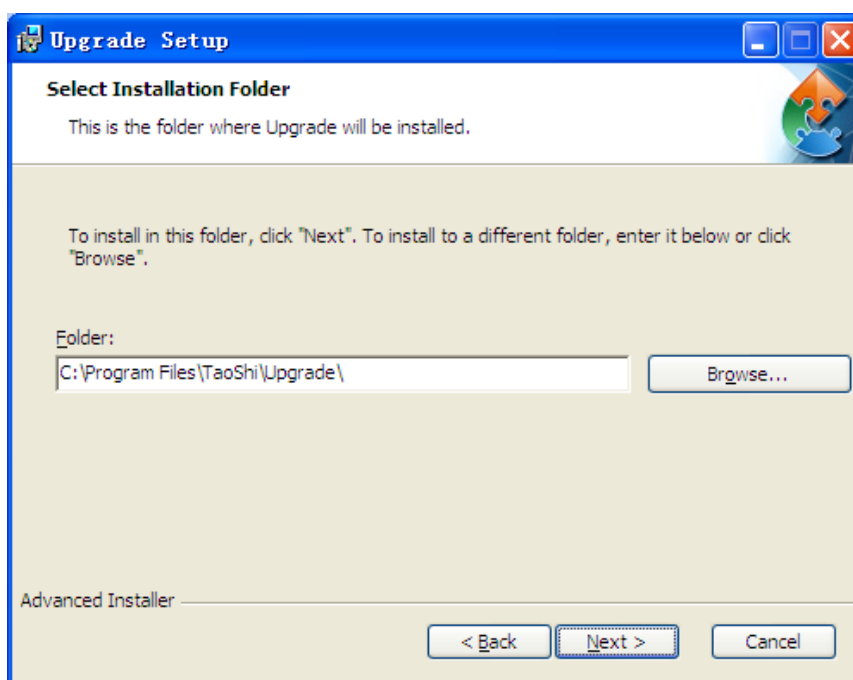
The upgrade tool can use JPG images to update, also can upgrade new program (.Bin file); upgrade by LAN IP, also can be upgraded remotely.

**The upgrade tool installation.** get the installation files from the Bonus CD or ask company for technical support

**UpgradeTool\_En\_20130311.msi** Double click to install .



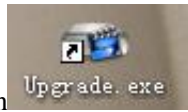
choose "next" show as follow :



Select the installation path , click "next "and wait for installation , the upgrade icon will

appear on the desktop when finished installation

## 二、Upgrade operation



Step 1. Find the quick icon and open it as the picture shows



Summary description :

NO: the device serial list

IP address : IP address

Port: the device port

Describe : Describe the device info

Ip search : Searching device button

Add Device: Increasing equipment button manually

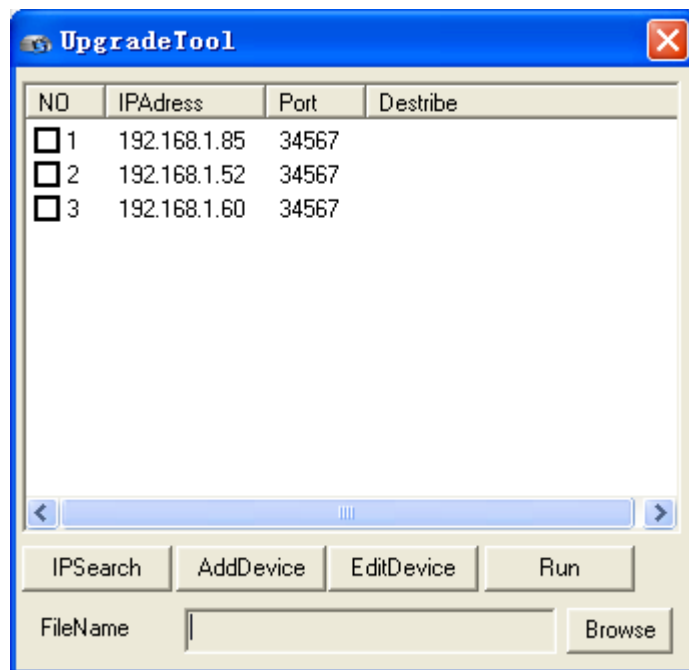
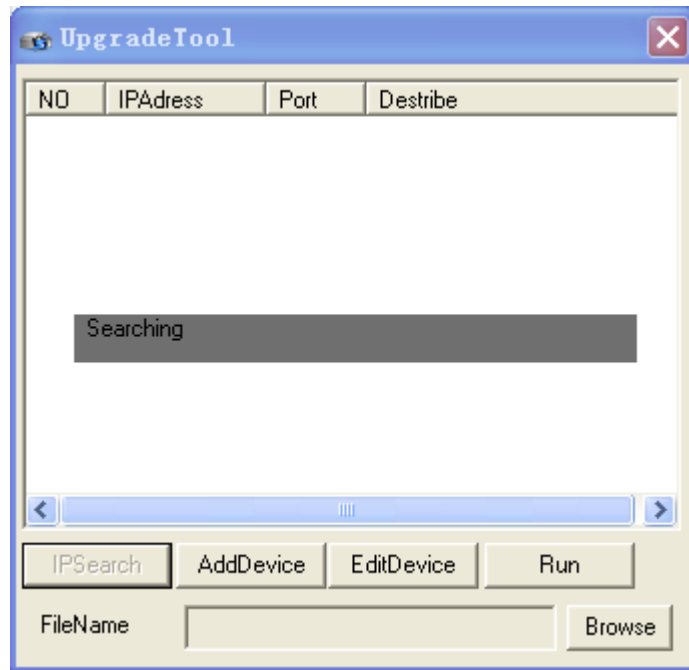
Edit Device: button for Modify the device information

Run: Run button

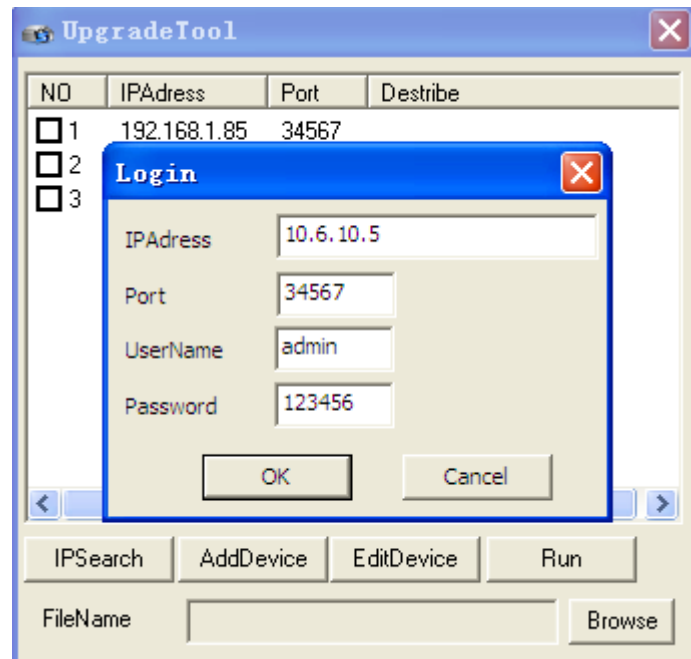
Browse: Choose the upgraded file contents

Step 2 . Add device

A. Upgrade in LAN , Click “IP searching “

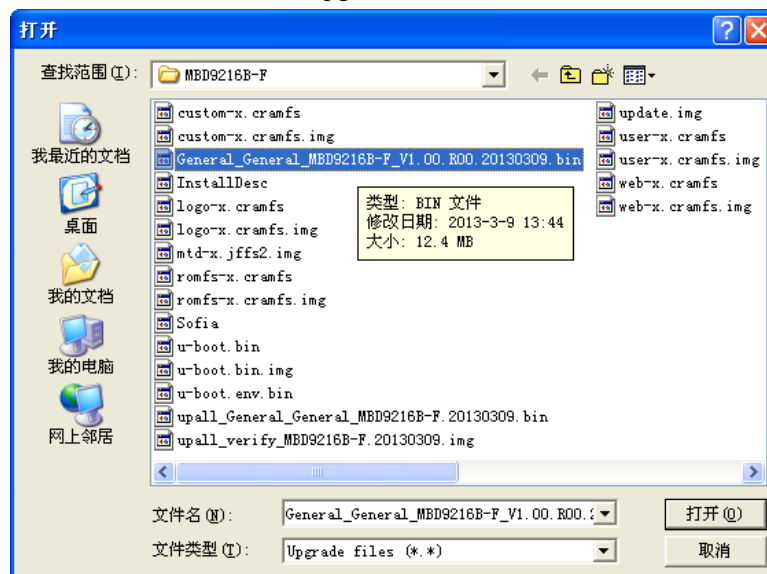


B、Upgrade in WAN , Click “Add device “ shows as picture :

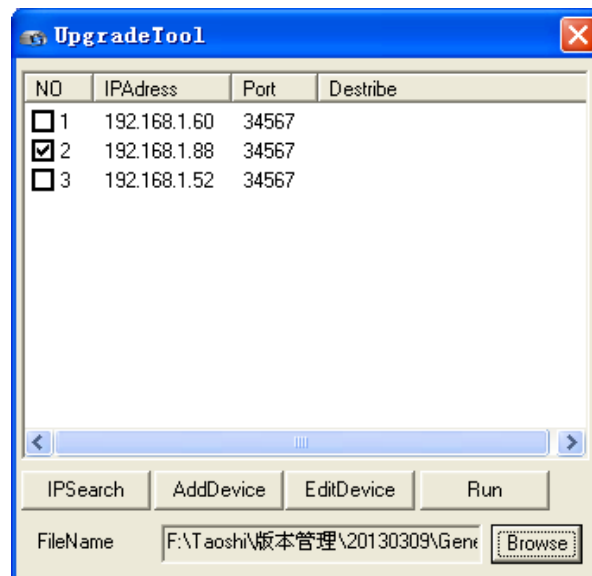


Add ip address , make sure the correct information of TCP port No , user name and password , it will connect successfully and display in the device list

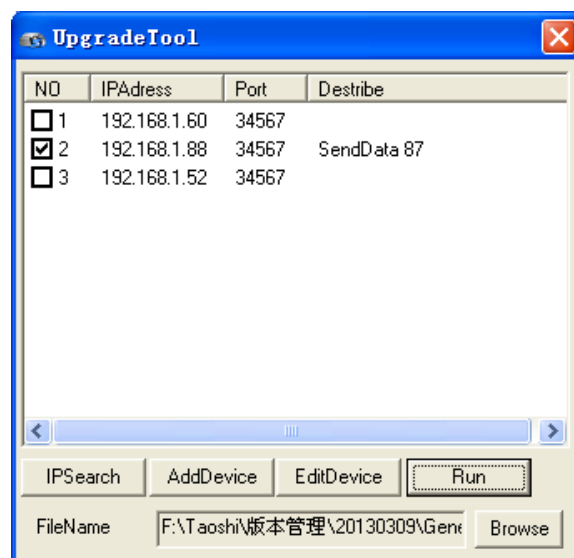
Step 3、 Select the device and choose the upgrade file , Click “browse “and find the update file



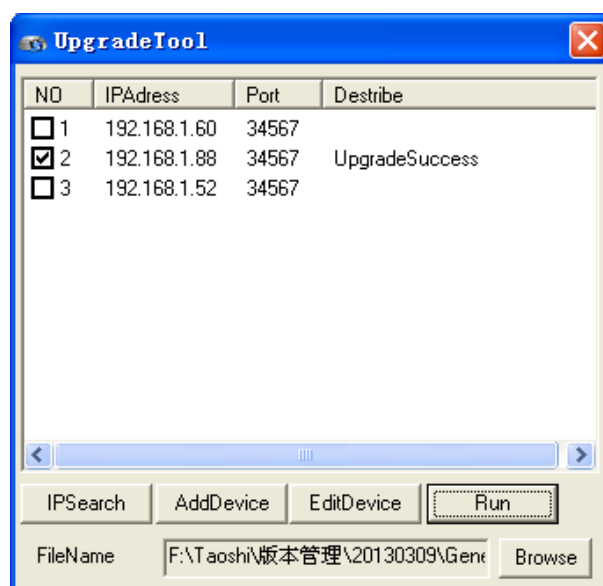
then click “open” show as below



Step4 : Upgrade . Click “Browse” wait for upgrading , when finished , the device will reboot .



Upgrading....

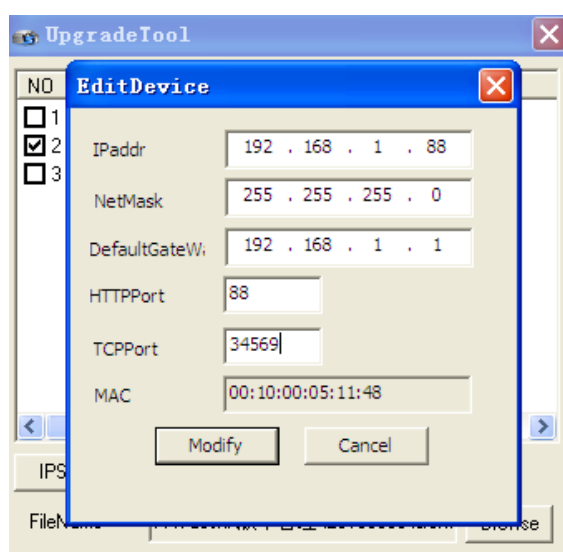
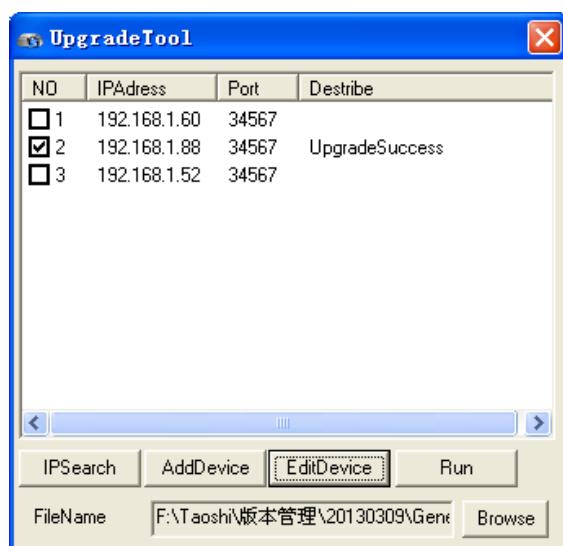


Upgrade finished

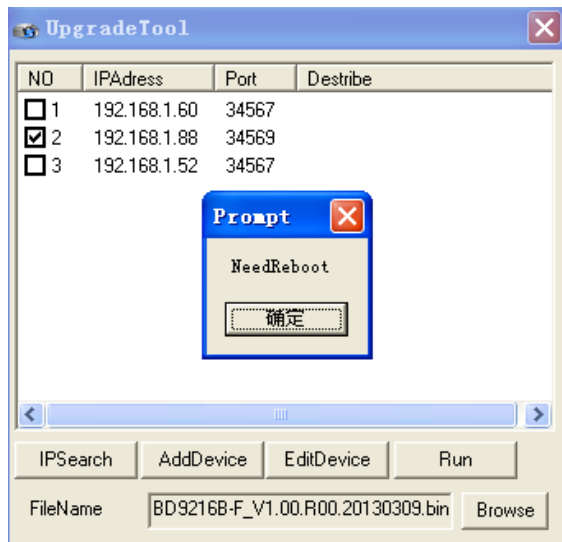
The device will reboot when finish upgrading

### Function display

1, Edit Device :To select the device and modify the device info .



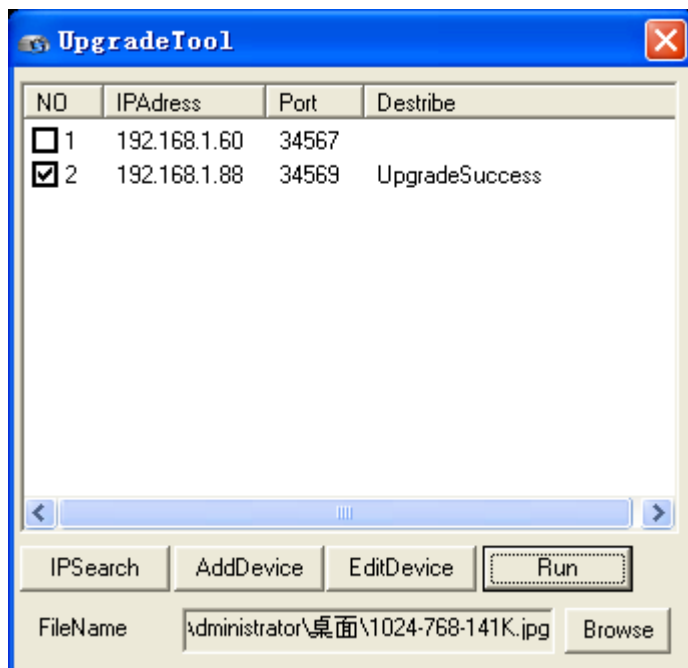
Modify the HTTP and TCP ports need to reboot the device effect, ip address come in to force at once



Reboot the device and the setting parameter come into force

## 2, Logo upgrade

To select the device and review the Logo need upgraded



Device reboot when finish upgrading

Re: Photo demand for upgrading Logo

Format: JPG—1024\*768 resolution

TS-DVR8504DF-FA2-S

TS-DVR8508XE-EA2-S ✓

= (3515-8M Flash): Maximum support 64K

TS-DVR8504DF-FA2 ✓

TS-DVR8508XE-EA2 ✓
TS-DVR8516CS-FA2

(3515-16M Flash): Maximum support128K

(3520A): Maximum support256K

(3521): Maximum support256K

(3531): Maximum support256K